

潮绣产品的设计与销售项目成果

产品



手提包

口金包





口金包

口金包





口金包

口金包





肚兜





手帕

领带



手帕





帽子

帽子





发卡



化妆手镜



团扇





团扇

团扇





团扇

团扇





化妆手镜

化妆手镜



化妆盒套装





书签



书签



书皮

烘焙手套





醒狮
瑞獸 平安如意·驅邪避凶
威武雄壯·吉祥康健



车挂-醒狮





胸挂

香包





手机绳-京剧脸谱系列

挂袋





宠物口巾





化妆手镜

化妆手镜



化妆手镜



书签



装饰画



部分制作过程



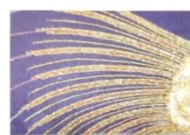
平金

打籽

锁枝



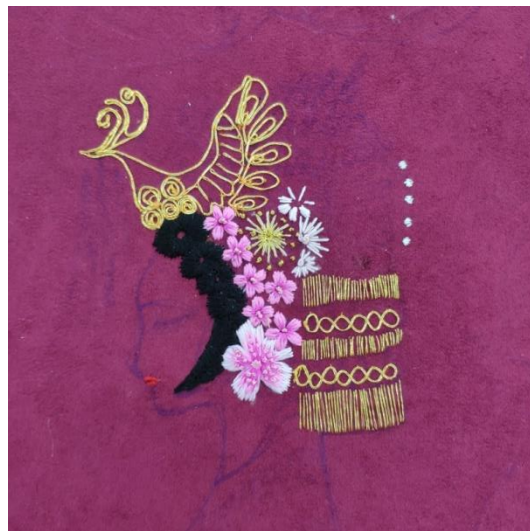
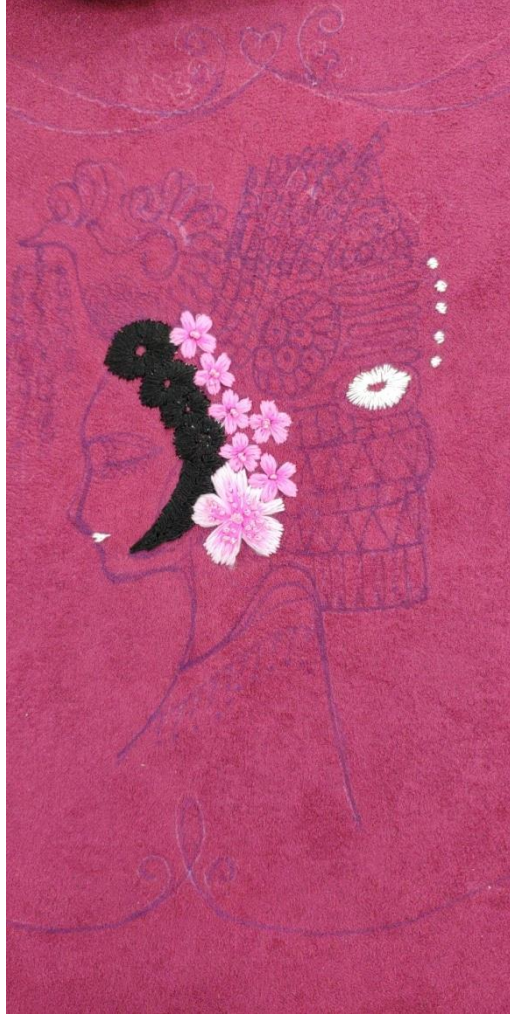
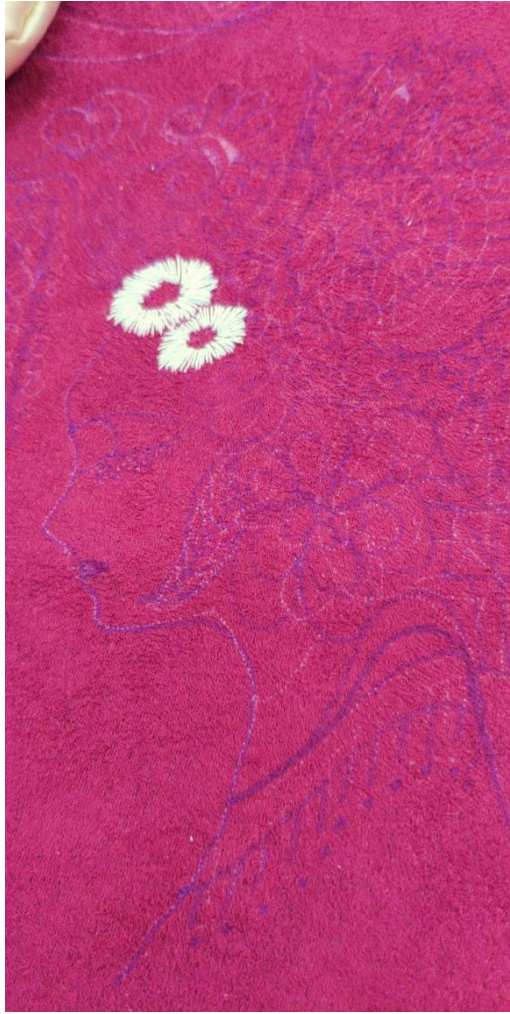
倒水枝针



锁枝

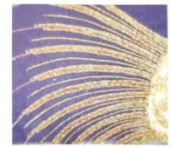


打籽





订金



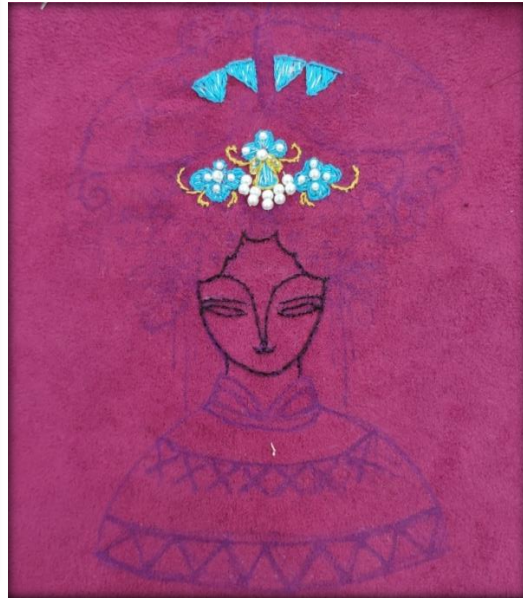
锁枝



铺针



打籽





垫绣咬针变化

铺针

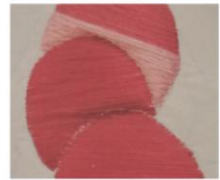
打籽针



垫绣咬针

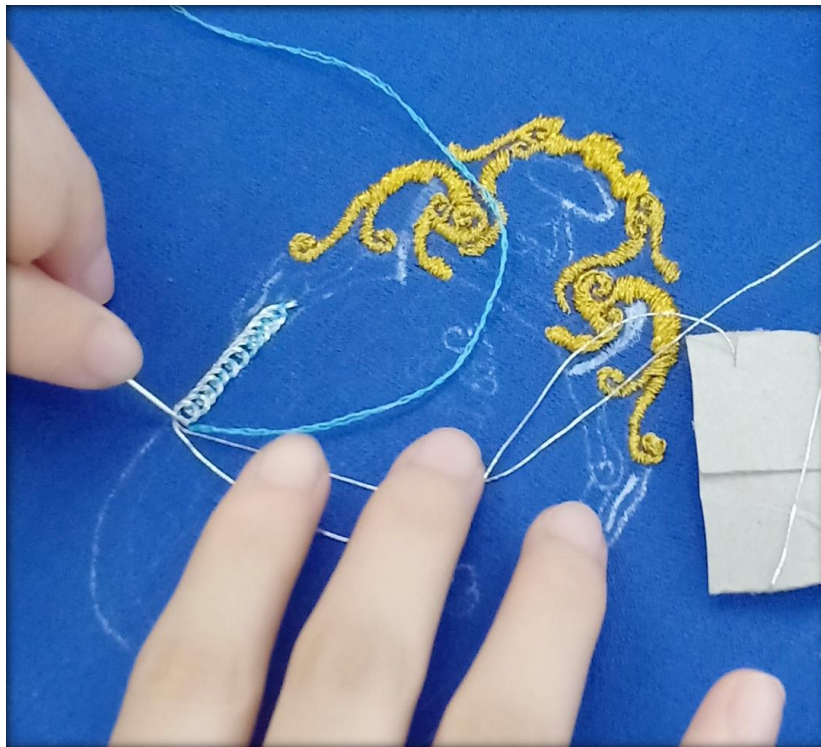
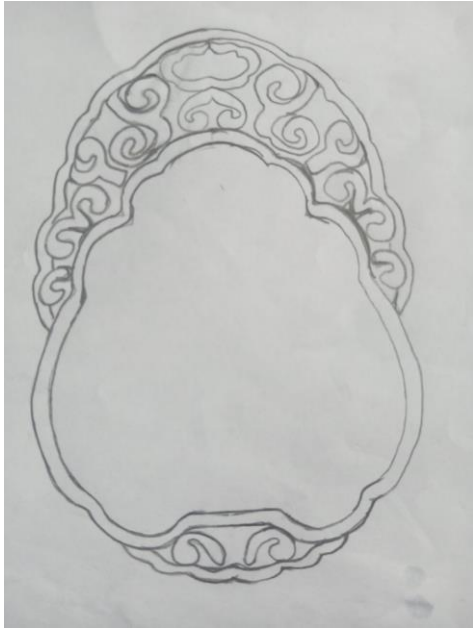


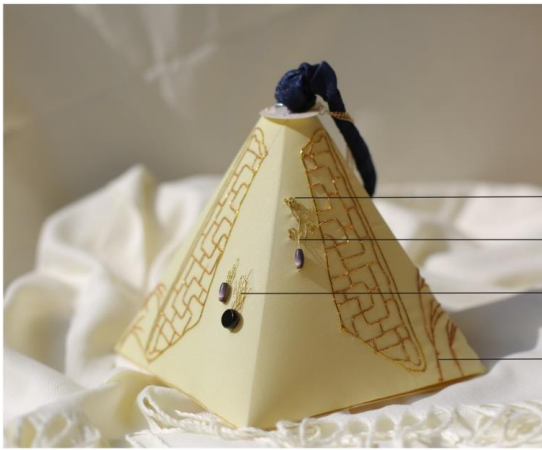
打籽针



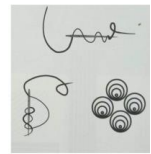
铺针



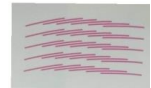




打籽针
 扯针
 接针的变化
 锁枝针



打籽针



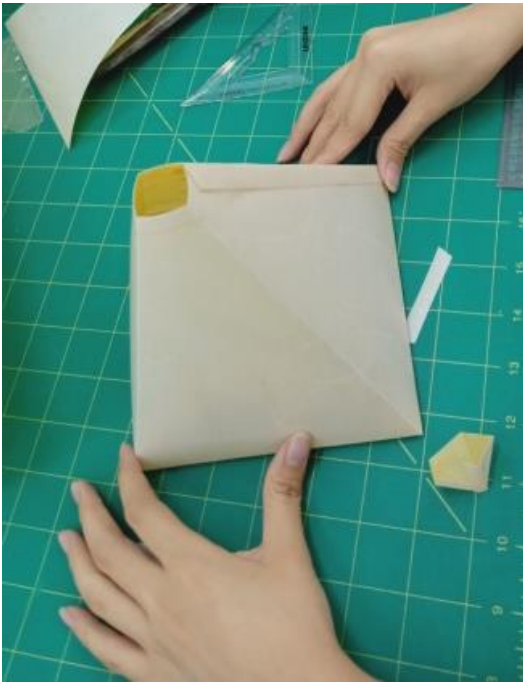
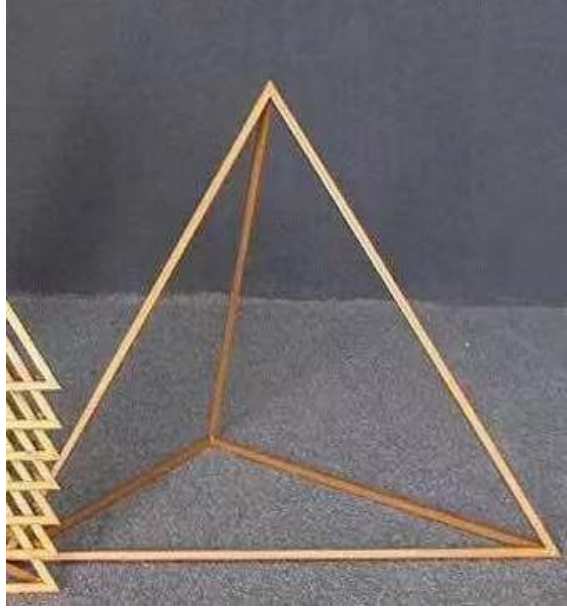
扯针



接针



锁枝针

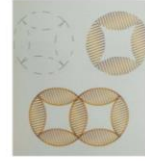




缀针
 铺针
 筑丁方栏针
 垫绣古钱目针



铺针



垫绣古钱目针



筑丁方栏针



缀针

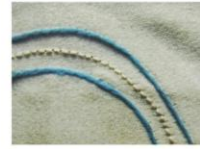






—— 钉针的变换
—— 捞针

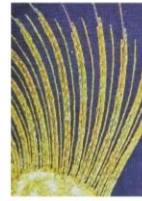
—— 锁枝



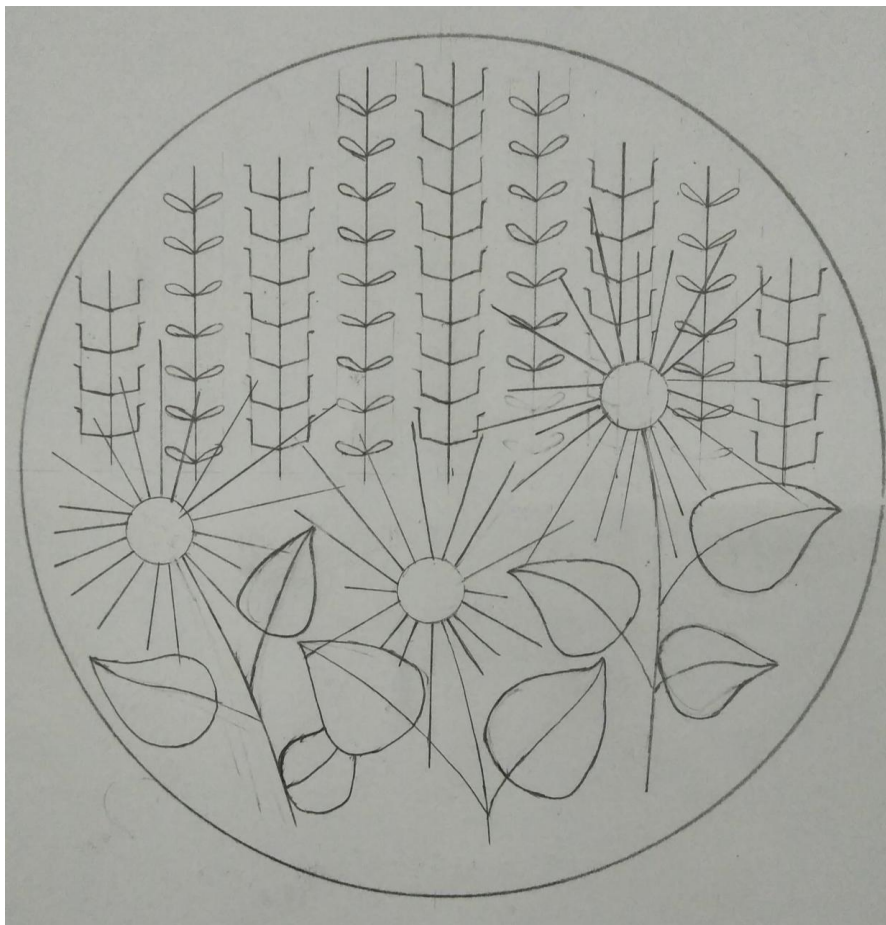
钉针



捞针



锁枝







捞针

铺针

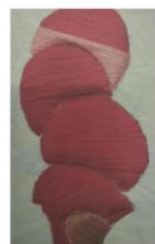
钉针的变换



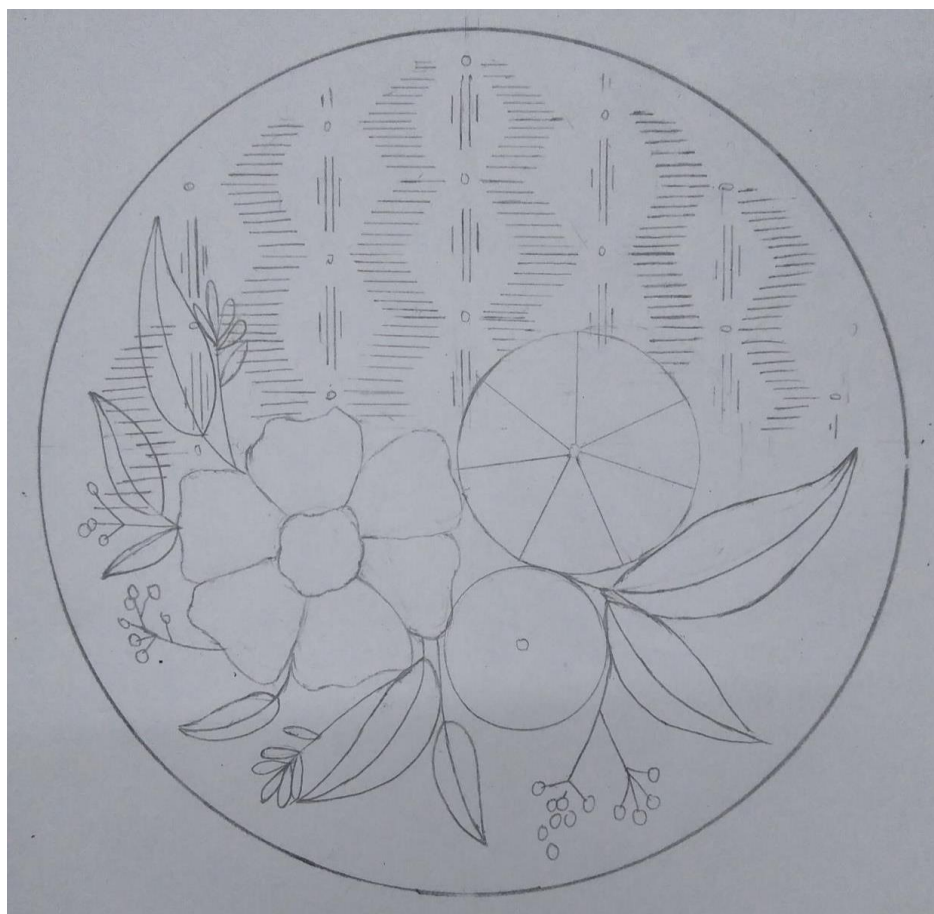
捞针



钉针



铺针







插针法

插针法

六角锦地
绣法

六角锦地
绣法

咬针法

六角锦地
绣法



咬针



六角锦地
绣



插针

v



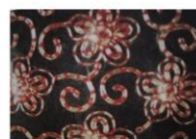




通锦针变化针

洗化绣变化针

打籽



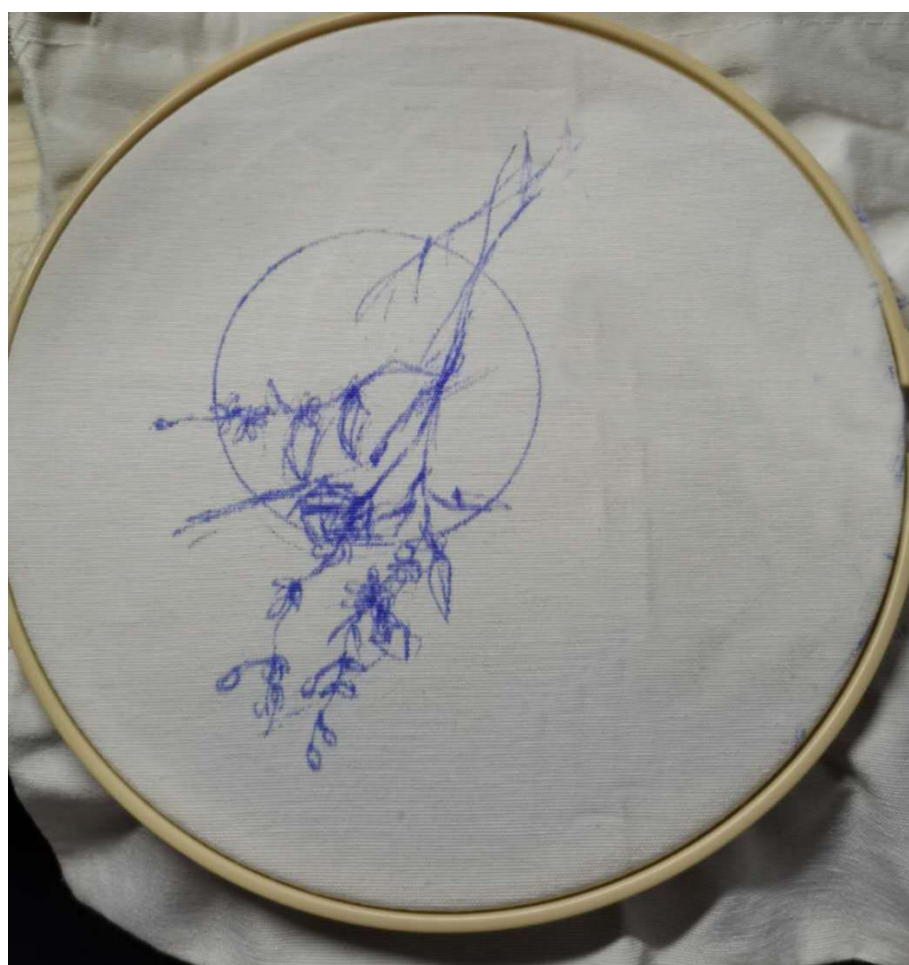
通锦针



洗化绣



打籽







钉金绣

铺针

直绣



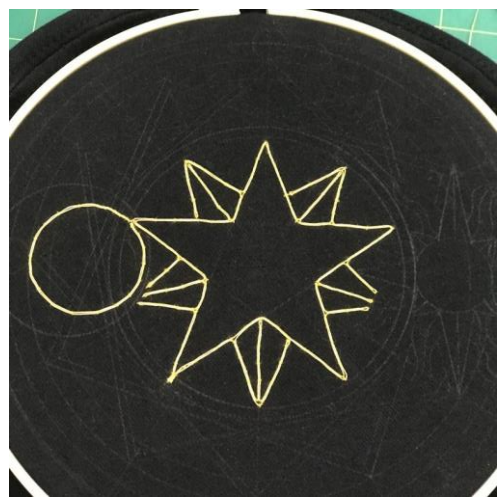
直绣

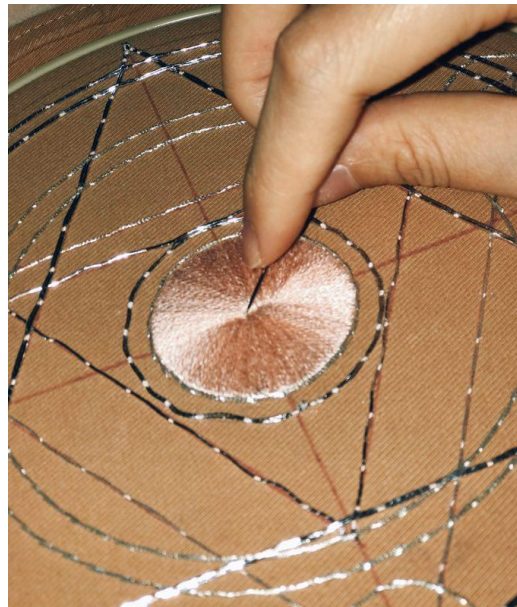


铺针



钉金绣







铺针

铺针变化针

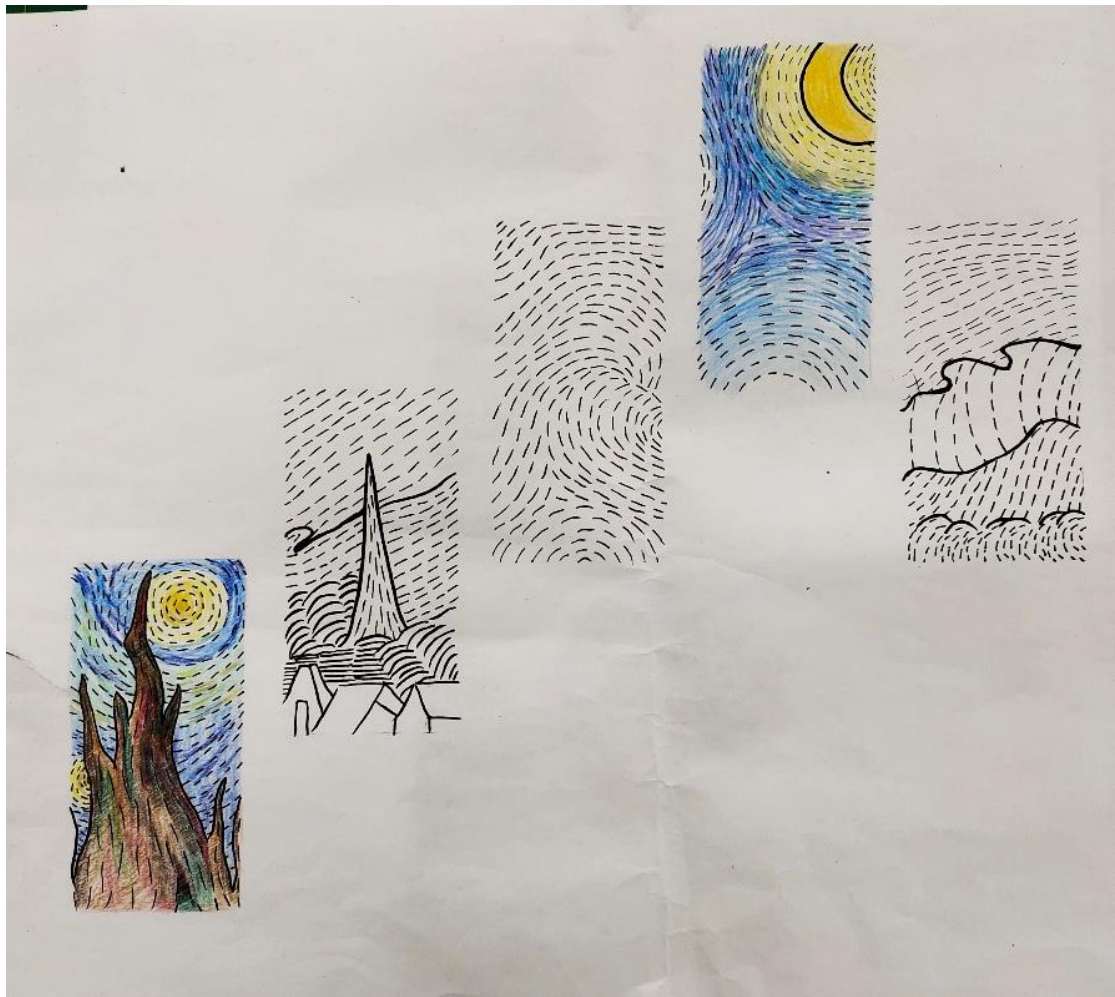
凹针

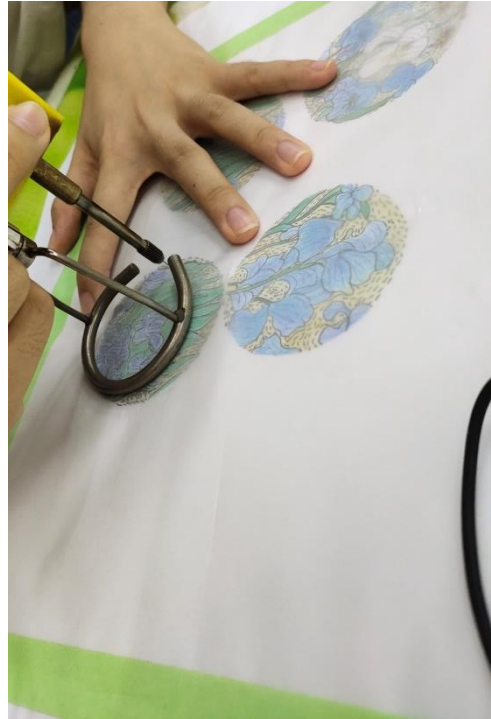
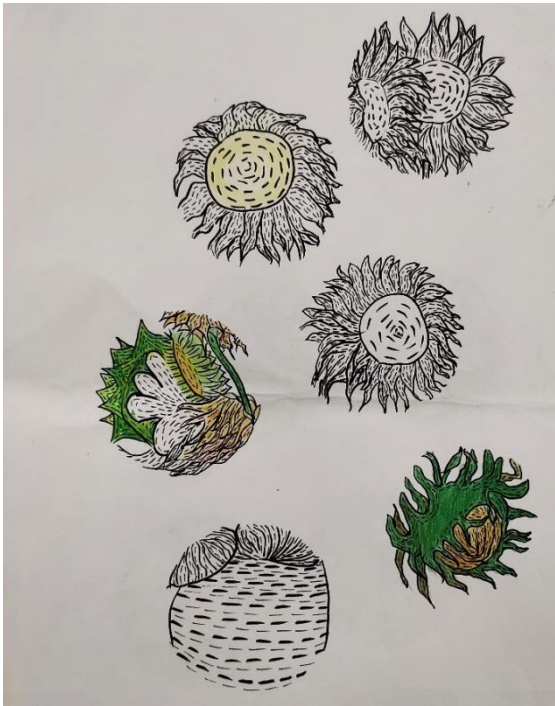


凹针



铺针

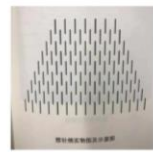






搭针变化针

搭针变化针



搭针

